

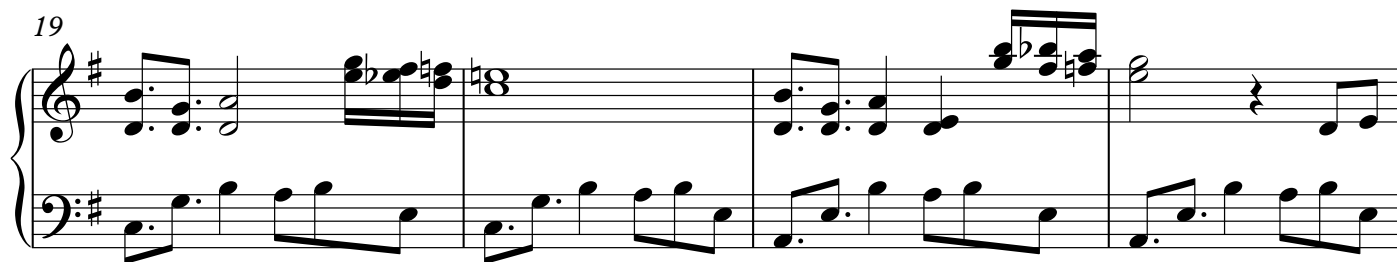
# Wareta Ringo

Shin Sekai Yori ED

Original Artist Risa Taneda

Transcribed by Govz11Legacy

♩ = 120



26

29

32

The image shows a musical score for measures 32, 33, and 34 of 'The Swan' by Camille Saint-Saëns. The score is in G major and 3/4 time. Measure 32 begins with a piano introduction, featuring a treble staff with chords and a bass staff with eighth notes. Measure 33 shows a melody in the treble staff and accompaniment in the bass staff. Measure 34 continues the melody and accompaniment, ending with a repeat sign.

35

38

This block contains measures 38, 39, and 40 of the musical score. Measure 38 begins with a treble clef and a key signature of one sharp (F#). The melody in the treble staff consists of eighth and sixteenth notes, with a repeat sign at the end. The bass staff provides a simple accompaniment with quarter and eighth notes. Measure 39 continues the melody and accompaniment. Measure 40 concludes the section with a final chord in the treble staff and a whole note in the bass staff.